

UNITO ANYWHERE & SMART APP

Full Control for UNITO Smart Water System

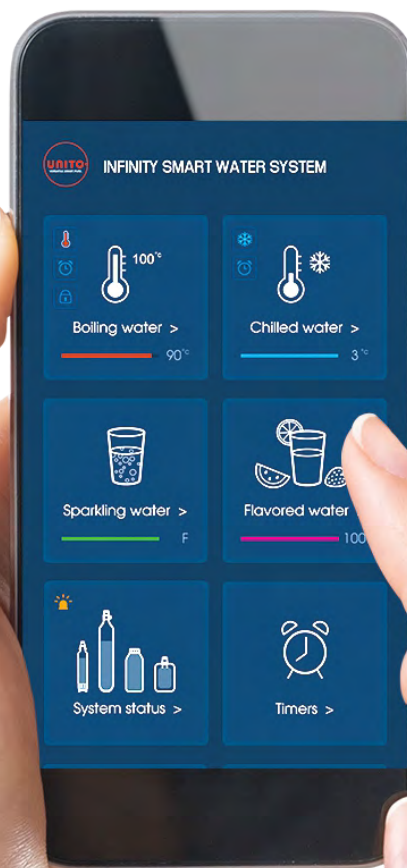
REV: C0035-R1944V4

LAVA • SPARKLE • ELEMENTS • INFINITY

EN

DE

NL



User Guide
Benutzerhandbuch
Gebruikershandleiding

EN

INTRODUCTION.....	1
CONNECTIONS.....	1
BASIC OPERATIONS.....	3
SETTINGS.....	9

DE

EINLEITUNG.....	13
VERBINDUNGEN.....	13
GRUNDLEGENDE BEDIENUNGEN.....	15
EINSTELLUNGEN.....	21

NL

INLEIDING.....	25
VERBINDINGEN.....	25
BEDIENING.....	27
INSTELLINGEN.....	33

UNITO ANYWHERE APP is specially designed to fully control UNITO water system. User may adjust water temperature, set timer, monitor system performance and control other features enabling water and energy savings.

System requirements

- A stable network connection or stable bluetooth connection is essential for efficient use.
- iOS 11.0/Android 8.0 or Higher.

Downloading and installing APP

- Connect your smart mobile device to Wi-Fi network through a router.
- From Apple App Store or Google Play, search for "UNITO ANYWHERE" to download the UNITO ANYWHERE APP and install it on your smart device.



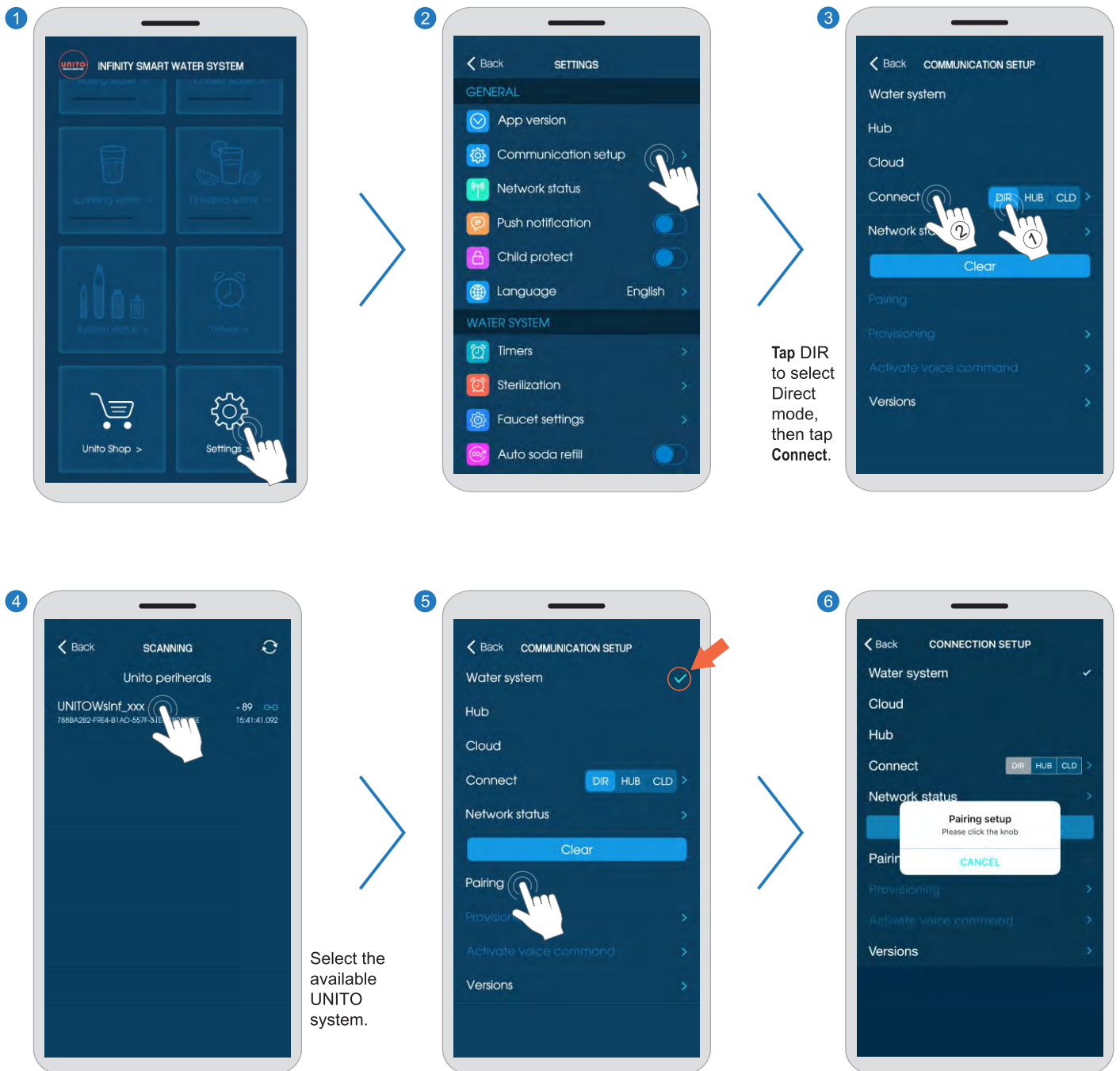
CONNECTIONS

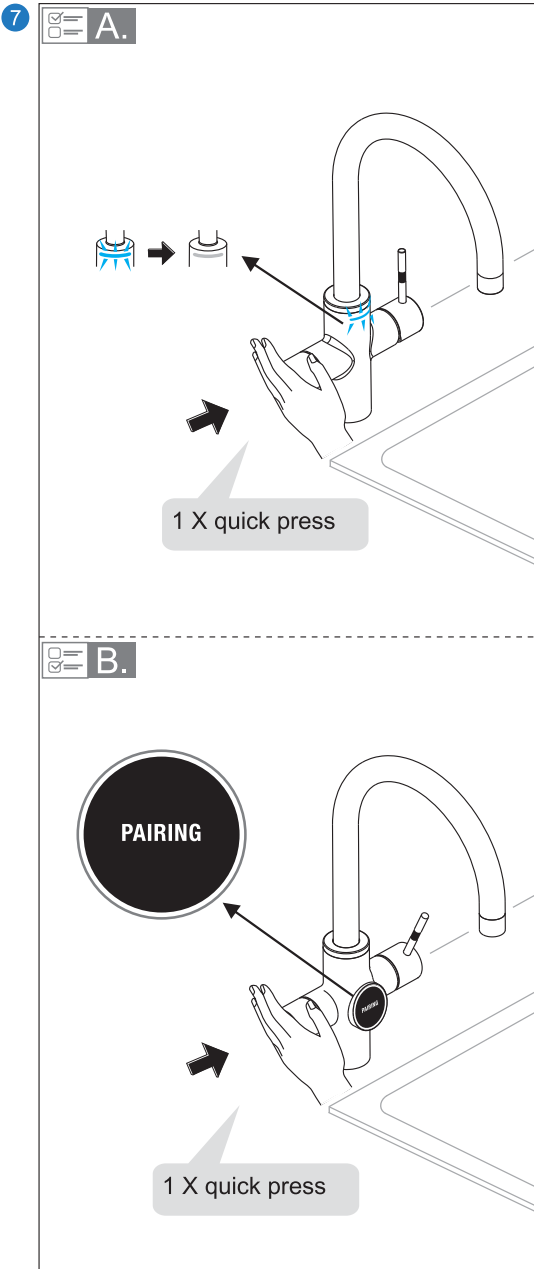
There is method to connect the APP with UNITO smart water system:

Direct connection. Available with • LAVA • SPARKLE • ELEMENTS • INFINITY.

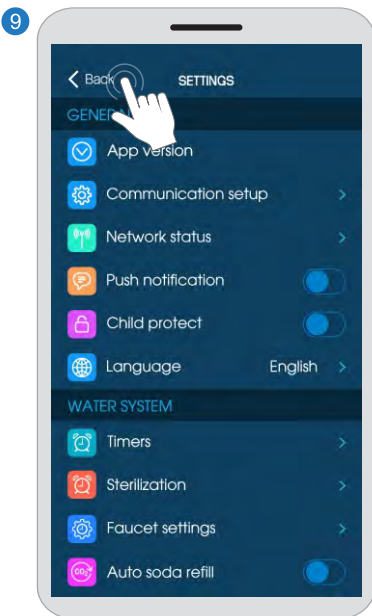
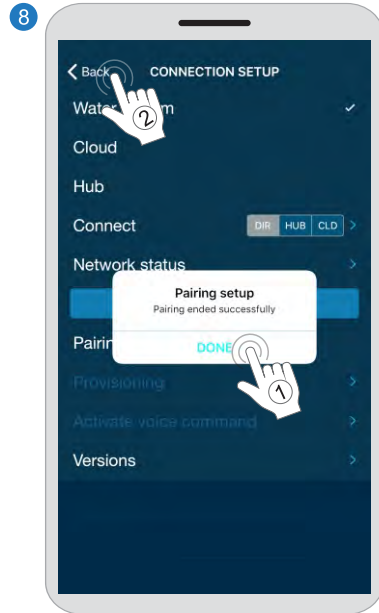
Direct connection

- Turn on Bluetooth connection on your smart mobile device.
- Launch UNITO ANYWHERE APP and follow below steps:





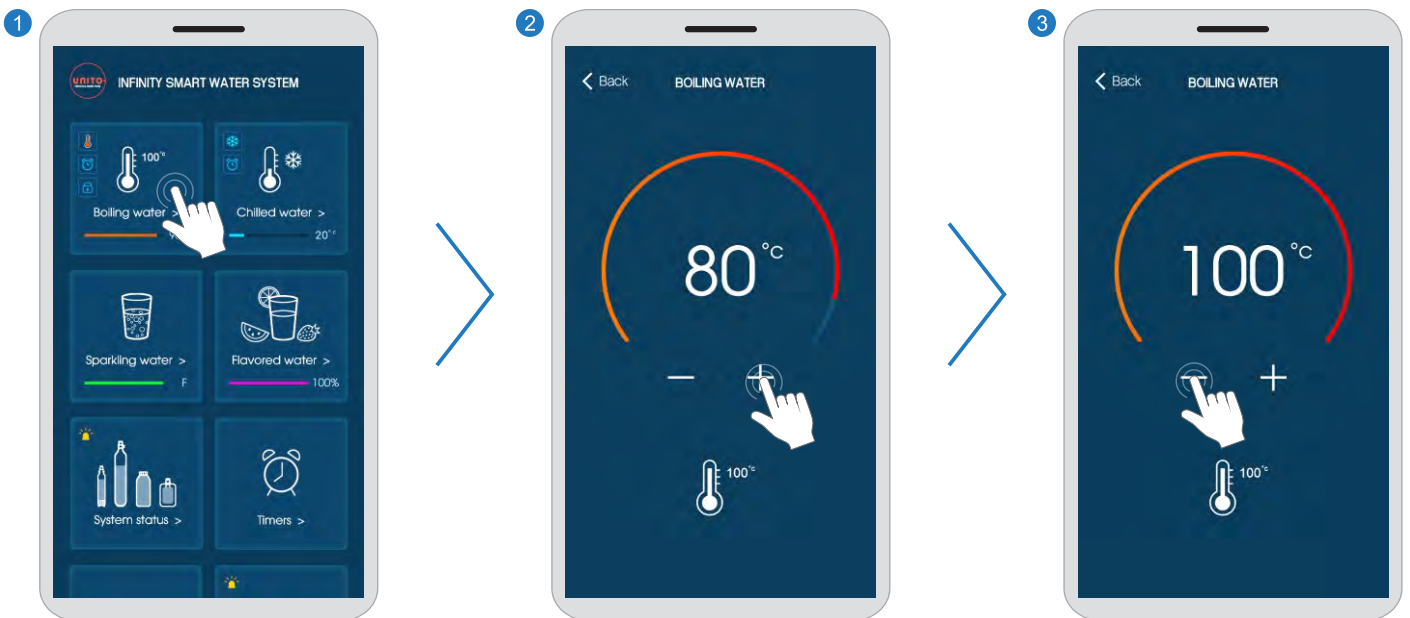
Quick press the electronic knob on the UNITO tap.



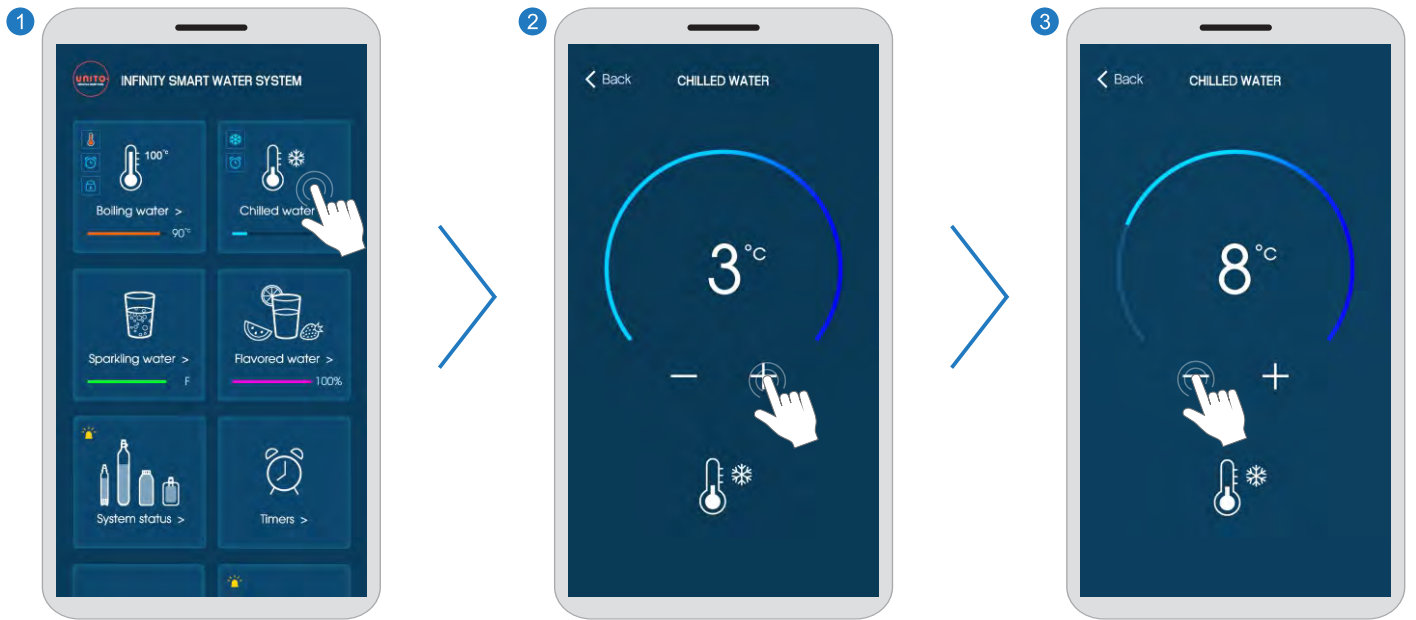
BASIC OPERATIONS



Hot water operations (• LAVA • ELEMENTS • INFINITY)



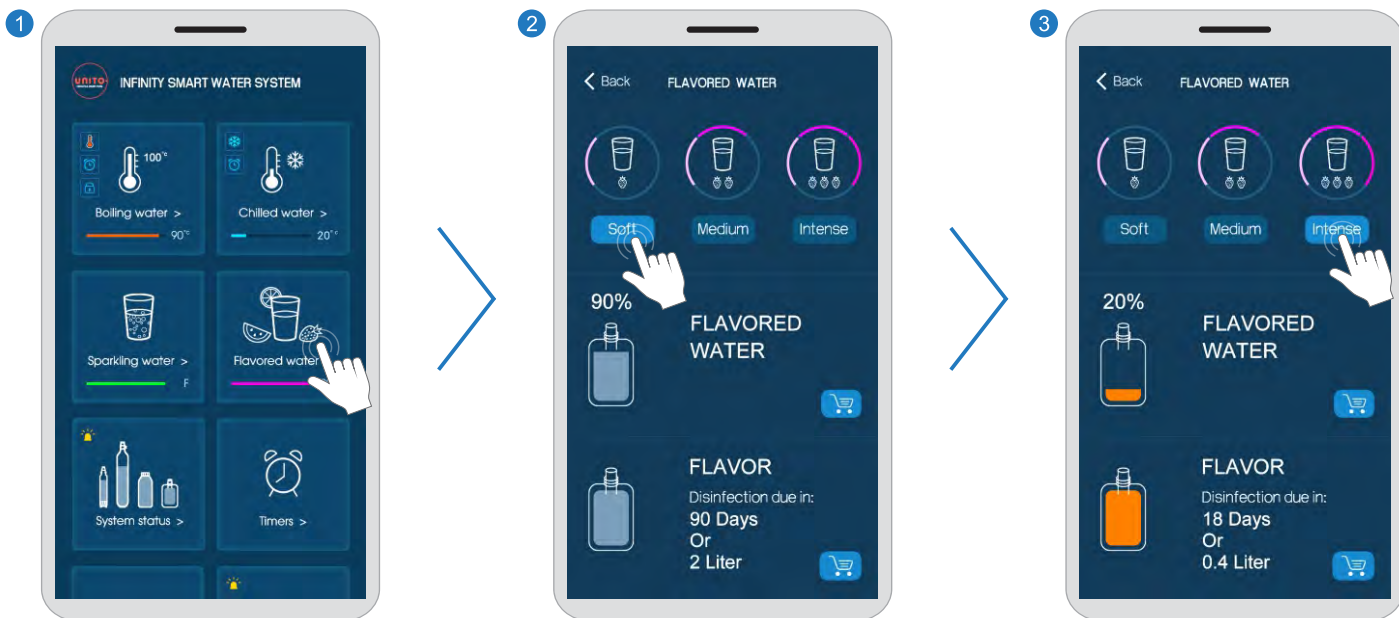
Cold water operations (• SPARKLE • ELEMENTS • INFINITY)



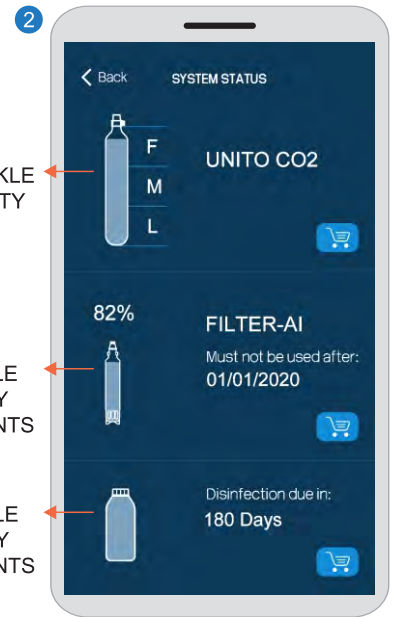
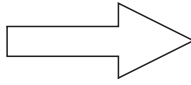
Soda water operations (• SPARKLE • INFINITY)



Flavor water operations (• LAVA • SPARKLE • ELEMENTS • INFINITY)



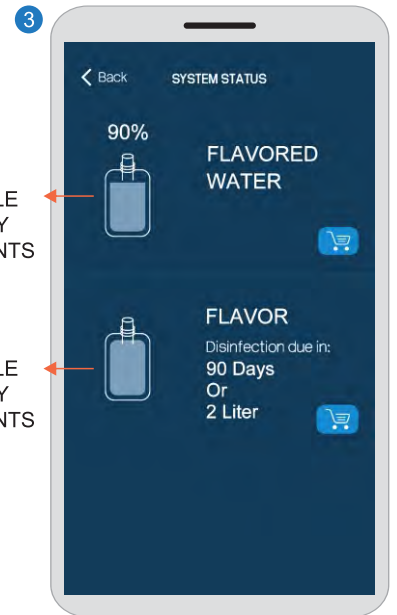
System status



• SPARKLE
• INFINITY

• SPARKLE
• INFINITY
• ELEMENTS
• LAVA

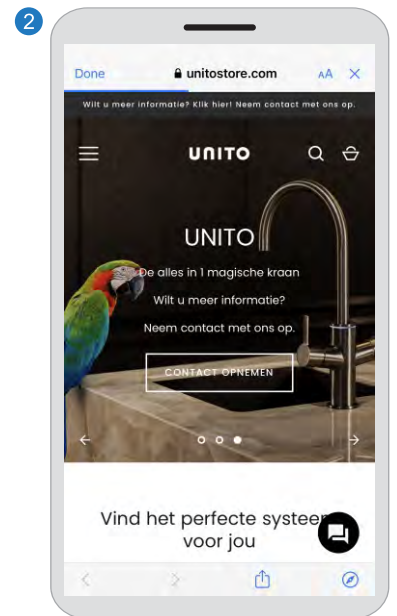
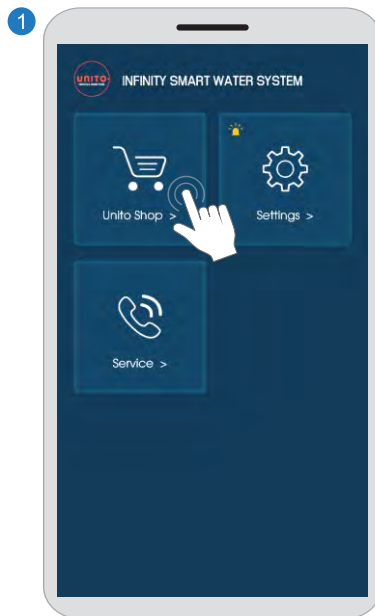
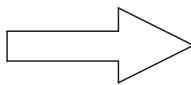
• SPARKLE
• INFINITY
• ELEMENTS



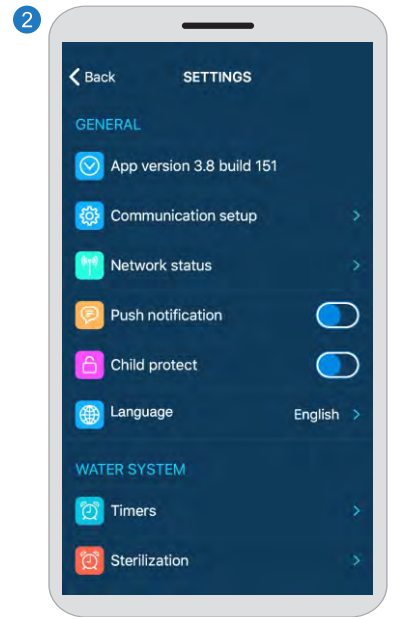
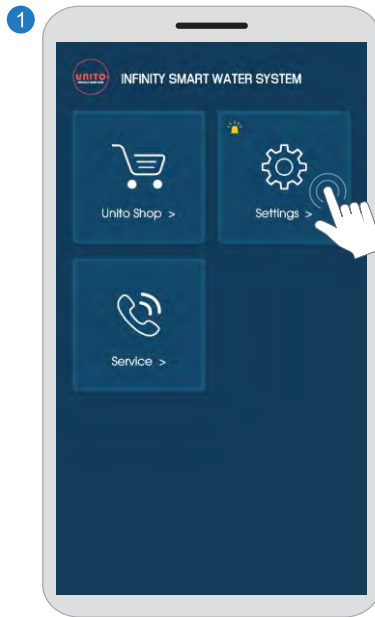
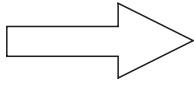
• SPARKLE
• INFINITY
• ELEMENTS
• LAVA

• SPARKLE
• INFINITY
• ELEMENTS
• LAVA

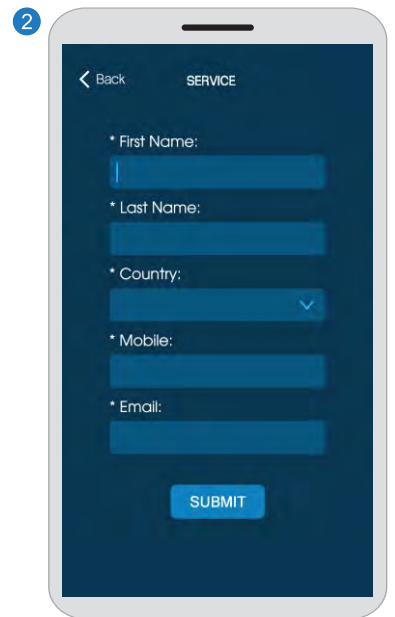
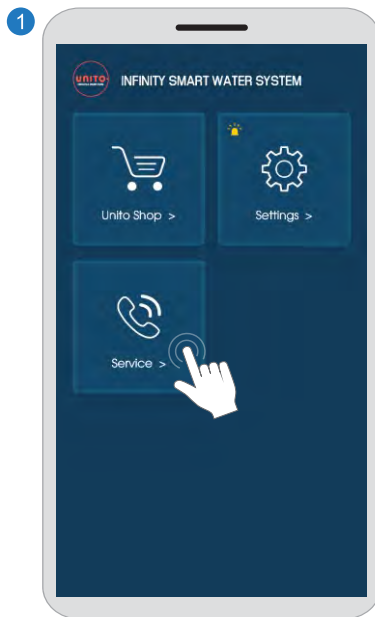
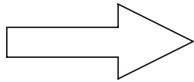
UNITO Shop

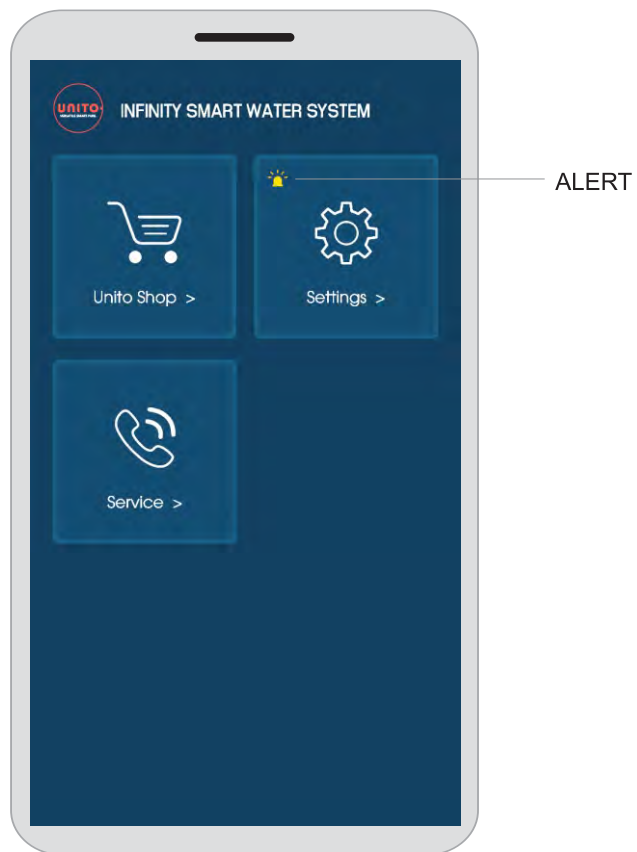
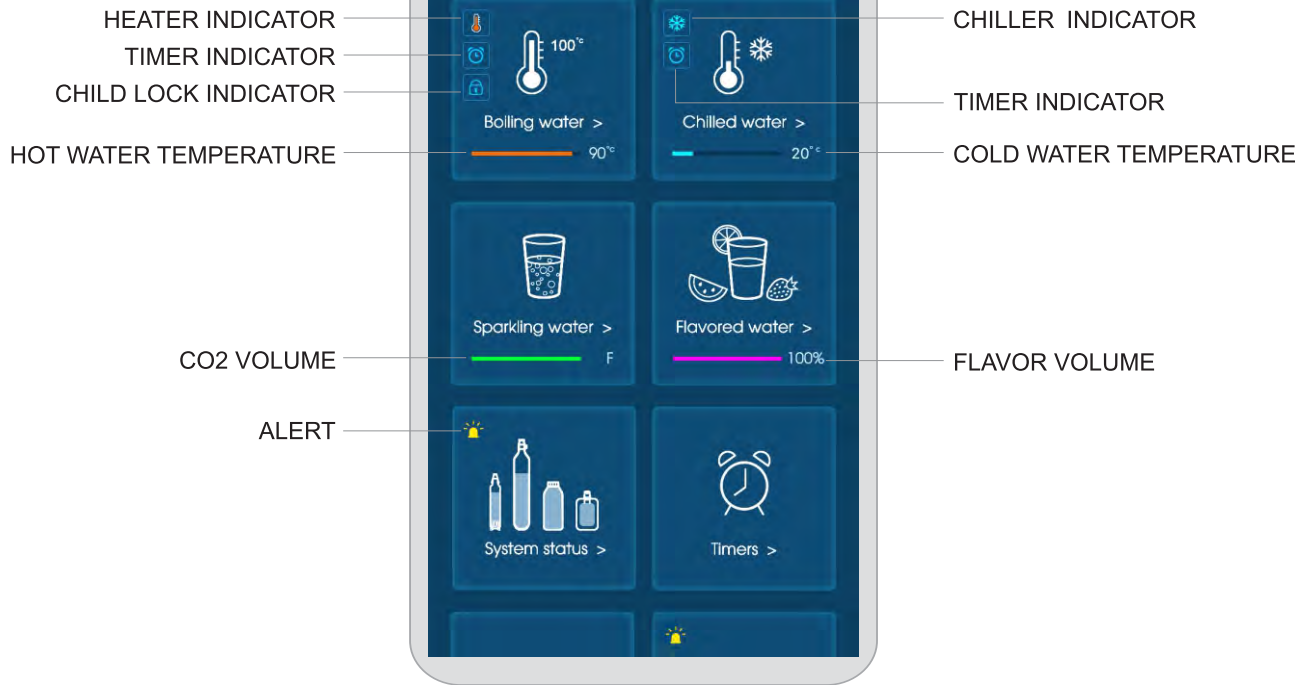


Settings

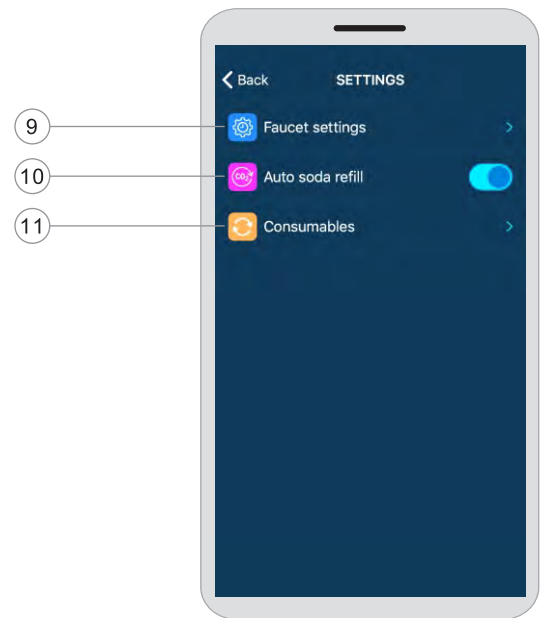
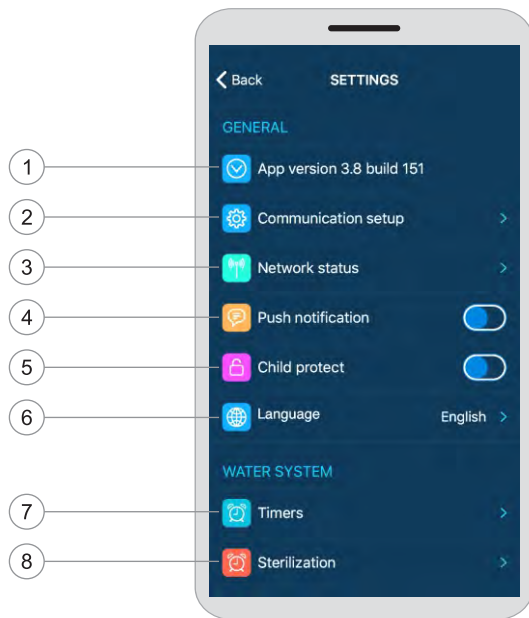


Service





SETTINGS



① App version

Displays the version number of the UNITO ANYWHERE APP.

② Communication Setup

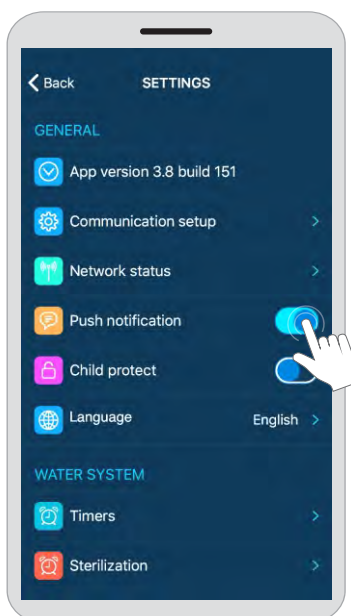
Select between Direct/Hub/Cloud mode (see pages 1-2).

③ Network status

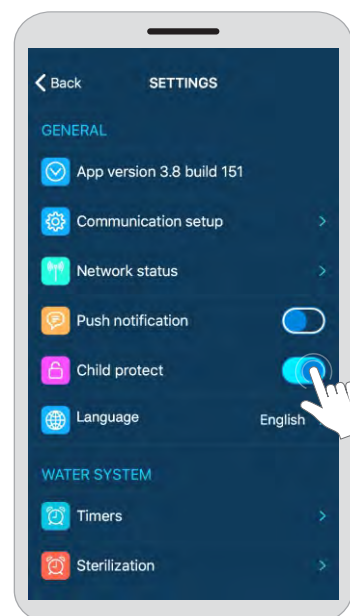
Shows the current system network status.



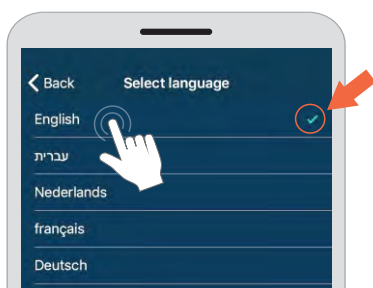
- ④ **Push notifications**
Push notifications are intended to notify users of new data from the water system or real-time status updates. User may enable/disable this feature.



- ⑤ **Child protect**
Toggle on to avoid unintended operation of the water system by children.



- ⑥ **Language**
Choose a language for UNITO ANYWHERE APP.

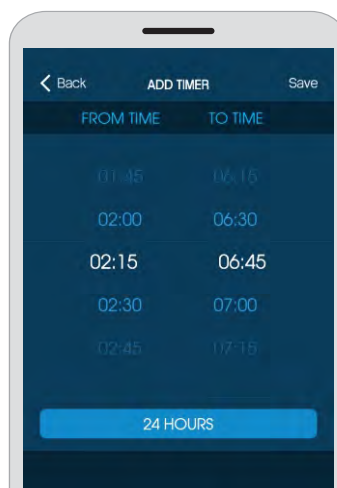
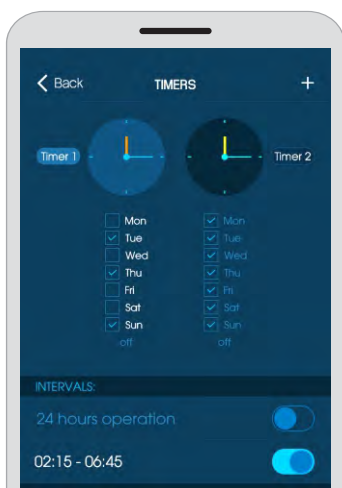


- ⑦ **Timers**
Timers profile allowing users to save energy by setting system operation time.

To set timers:

- On the menu bar, tap Settings > Timers to set the timer, by default, it is in 24-hours operation mode, toggle button to on mode in order to enable the timer setting.
- In the timer settings screen, tap **Timer 1** or **Timer 2** to select Timer 1 or Timer 2, tap to select the operating days of the timer. Tap **Back** to confirm the settings.
- Tap to set the working time intervals. Tap Save to confirm the settings. For example, by selecting days Monday thru Friday, and setting the time from 7:00 to 22:00, the water system will automatically turn on at 7am and turn off at 10pm every weekday.

Note: You can create two profiles, for example Timer 1 for weekdays and Timer 2 for weekends.

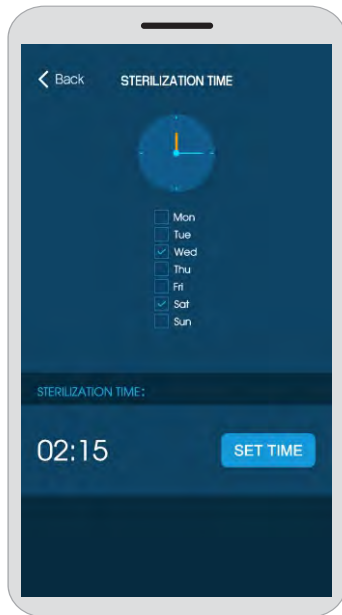


- ④ To stop and start the timer, toggle the On/Off button:



8 **Sterilization**

Select a time for tank sterilization. the recommended time is at night or at a time the system is normally not at use.



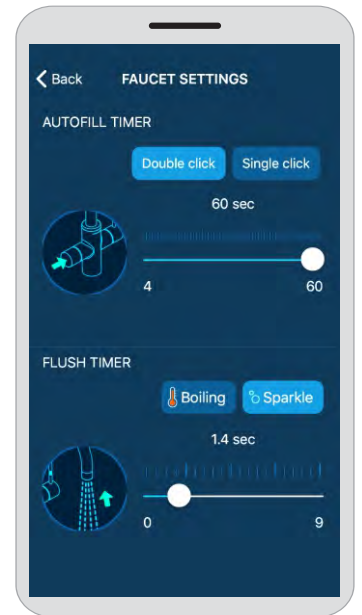
9 **Faucet settings**

Autofill timer

Setup autofill timer for single/double click.

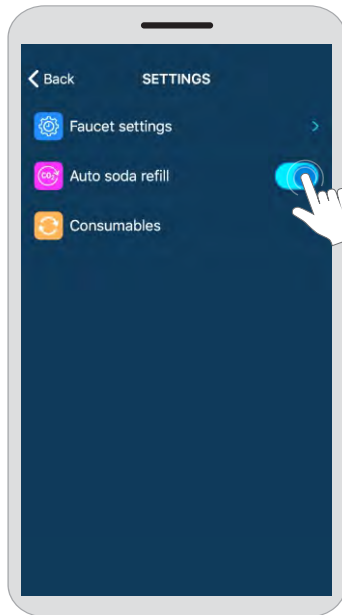
Flush timer

Setup spout flush timer to remove last dispensed water left in the spout.

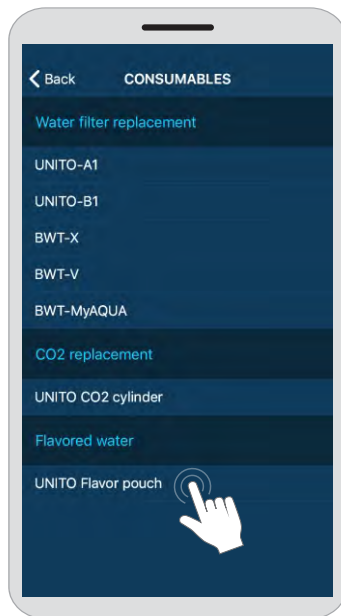
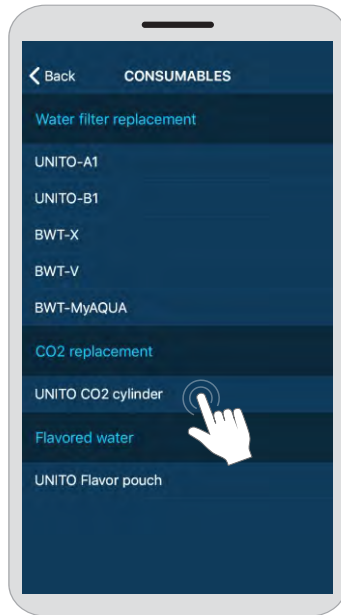
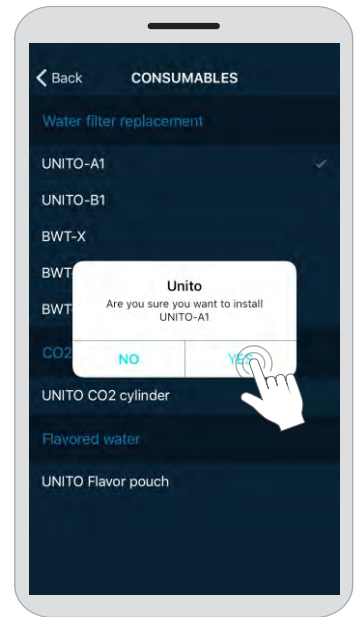
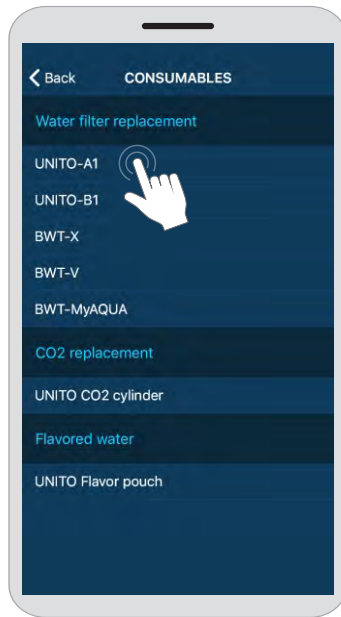


10 **Automatic refilling of soda water**

Enable/disable automatic soda remake operation. if disabled, the user must manually prepare a new batch of soda water (user manual - Manual sparkling water preparation).



11 Consumables
Inform the system when water filter, CO2 cylinder or flavor pouch was replaced.



UNITO ANYWHERE APP wurde speziell für die vollständige Steuerung des UNITO-Wassersystems entwickelt. Der Benutzer kann die Wassertemperatur einstellen, den Timer einstellen, die Systemleistung überwachen und andere Funktionen steuern, die Wasser- und Energieeinsparungen ermöglichen.

Systemanforderungen

- Eine stabile Netzwerkverbindung oder eine stabile Bluetooth-Verbindung ist für die effiziente Nutzung unerlässlich.
- iOS 11.0/Android 8.0 oder höher.

APP herunterladen und installieren

- Verbinden Sie Ihr Smart Mobile Gerät über einen Router mit dem WLAN-Netzwerk.
- Suchen Sie im Apple App Store oder Google Play nach "UNITO ANYWHERE", um die UNITO ANYWHERE APP herunterzuladen und auf Ihrem Smartphone zu installieren.



VERBINDUNGEN

Es gibt eine Methode, das APP mit dem UNITO Intelligente Wassersystem zu verbinden: Direkte Verbindung. Erhältlich mit • LAVA • SPARKLE • ELEMENTS • INFINITY.

Direkte Verbindung

- Schalten Sie die Bluetooth-Verbindung auf Ihrem Smart Mobile Gerät ein.
- Starten Sie UNITO ANYWHERE APP und folgen Sie den folgenden Schritten:

1 Tap on 'Einstellungen' (Settings) in the bottom right corner of the main menu.

2 In the 'EINSTELLUNGEN' (Settings) screen, tap on 'Kommunikationseinrichtung' (Communication Setup).

3 In the 'VERBINDUNGSEINSTELLUNGEN' (Connection Settings) screen, tap on 'Verbinden' (Connect) and then select 'DIR' (Direct).

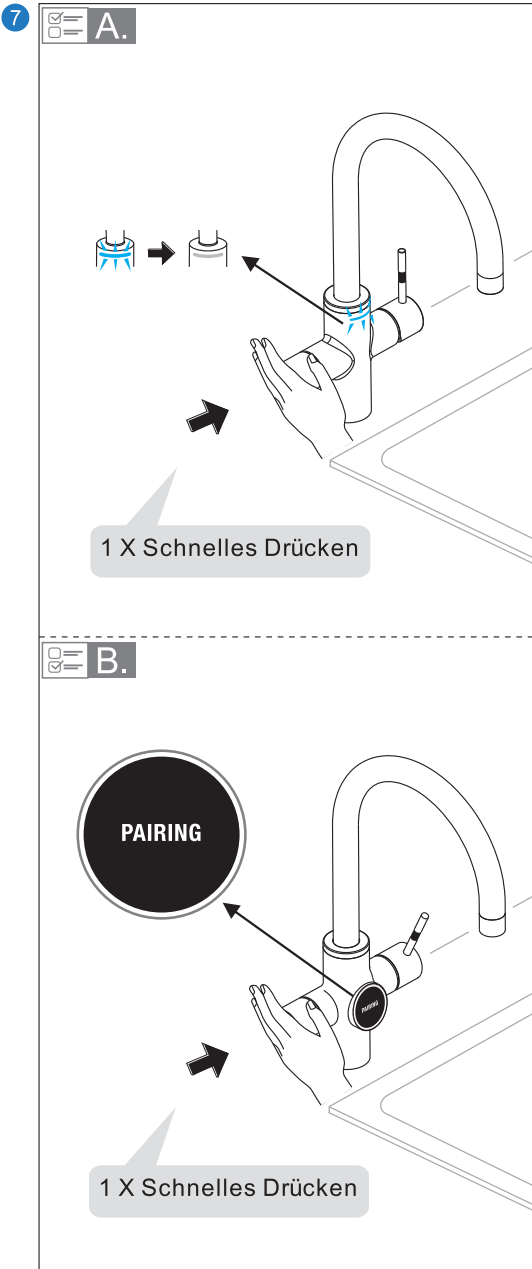
4 In the 'Scanne' (Scan) screen, tap on the detected device 'Unito Eingabegeräte'.

5 In the 'VERBINDUNGSEINSTELLUNGEN' (Connection Settings) screen, tap on 'Paarung' (Pairing).

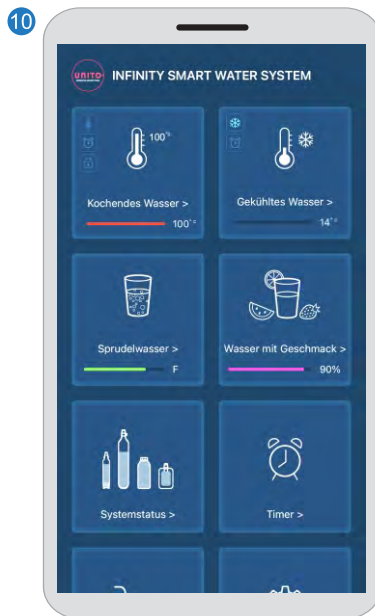
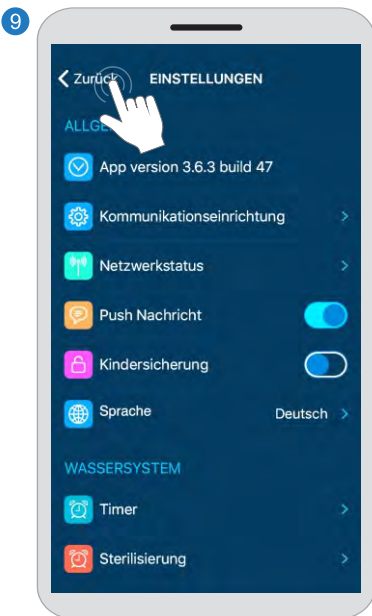
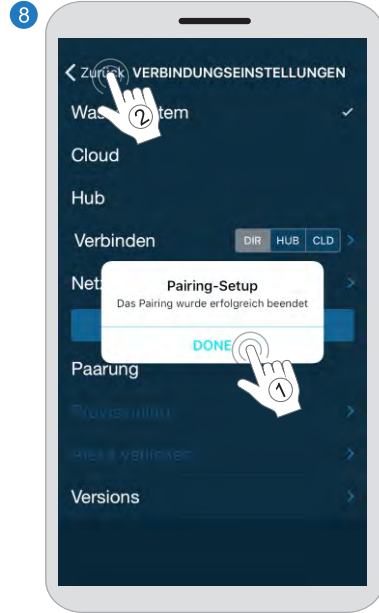
6 A 'Pairing-Setup' dialog box appears with the instruction: 'Bitte klicken Sie auf den Wasserhahnknopf' (Please click the faucet button). Tap on 'Abbrechen' (Cancel).

Tippen Sie auf DIR, um den Direktmodus auszuwählen und dann auf Connect.

Wählen Sie die verfügbare UNITO FAUCET aus.



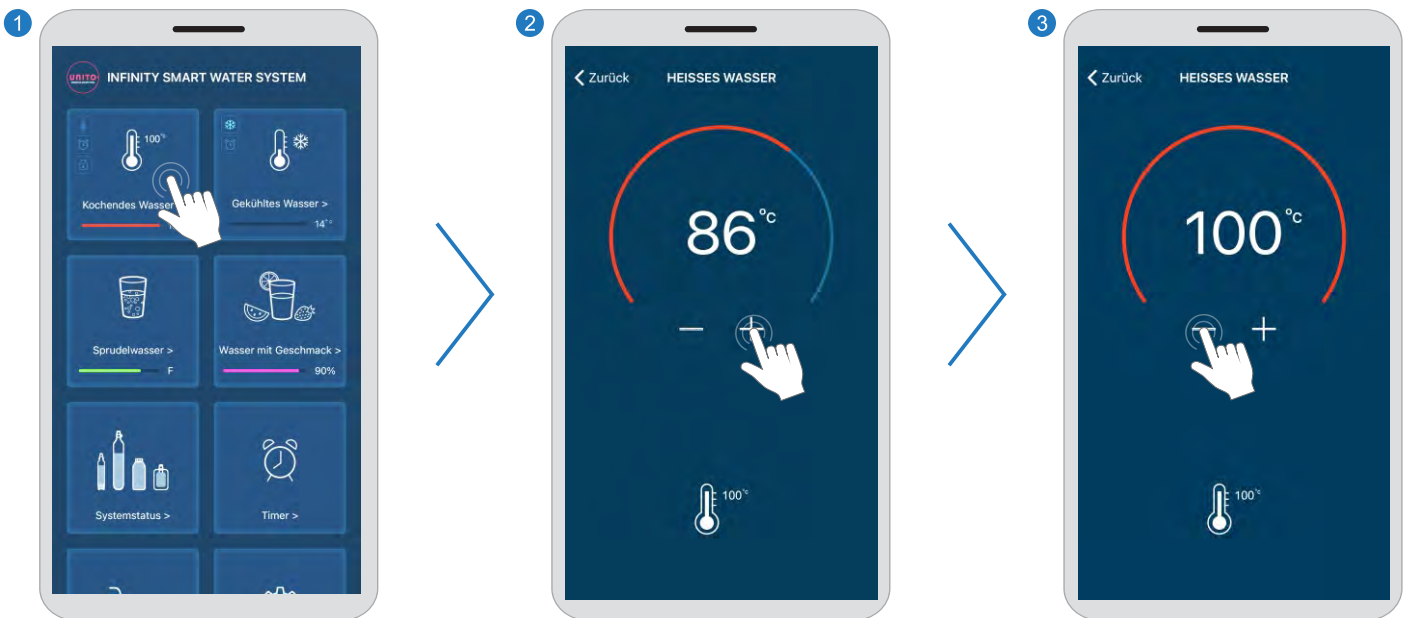
Drücken Sie schnell den elektronischen Knopf am UNITO-Wasserhahn.



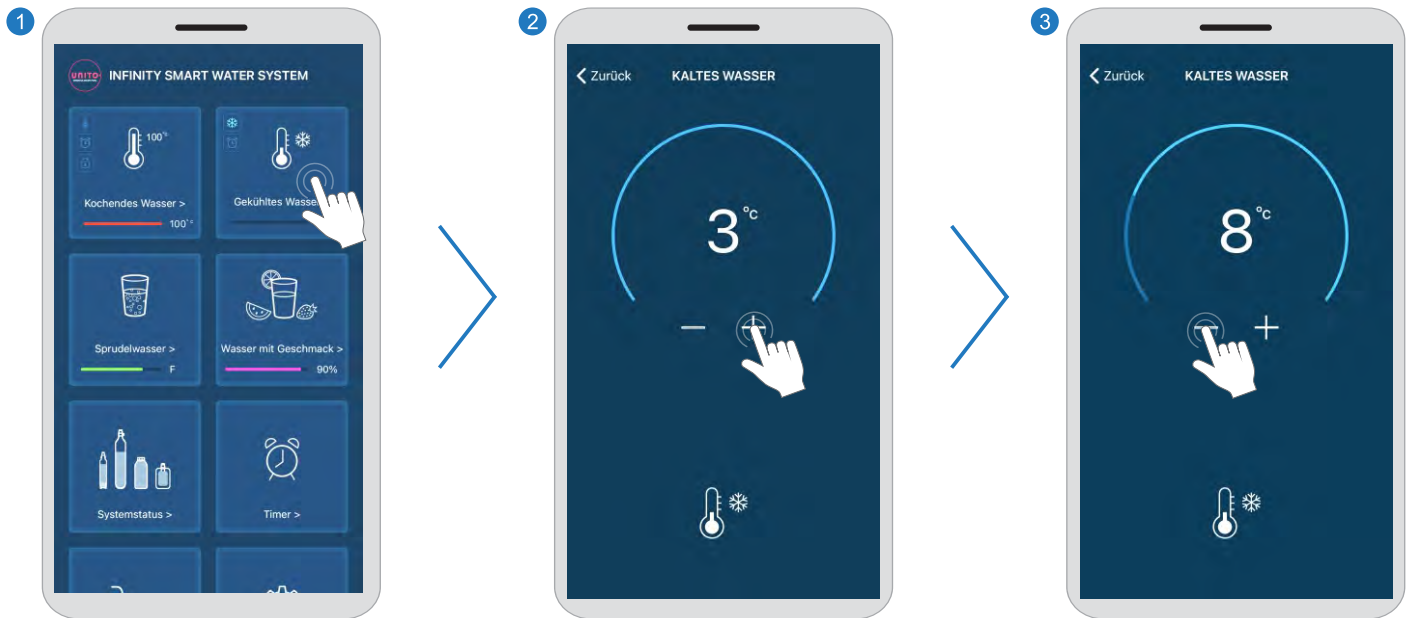
GRUNDLEGENDE BEDIENUNGEN



Warmwasserbetrieb (• LAVA • ELEMENTS • INFINITY)



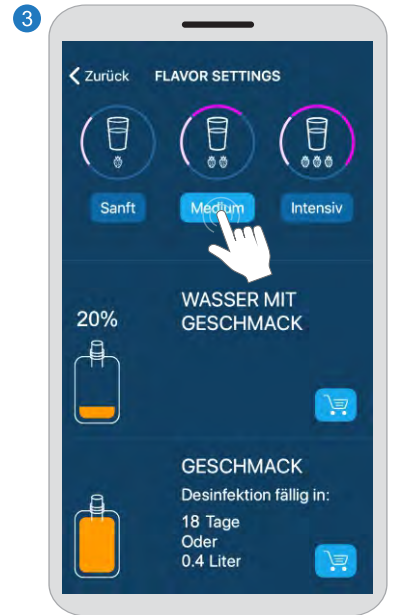
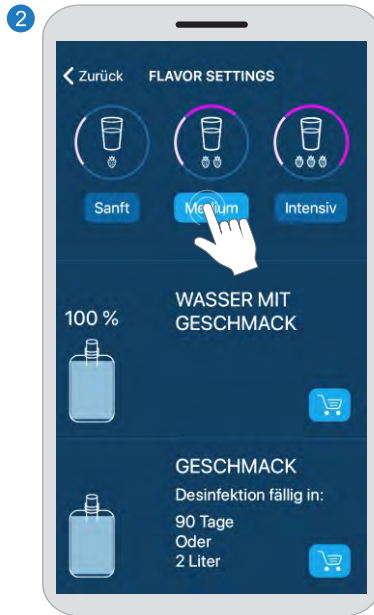
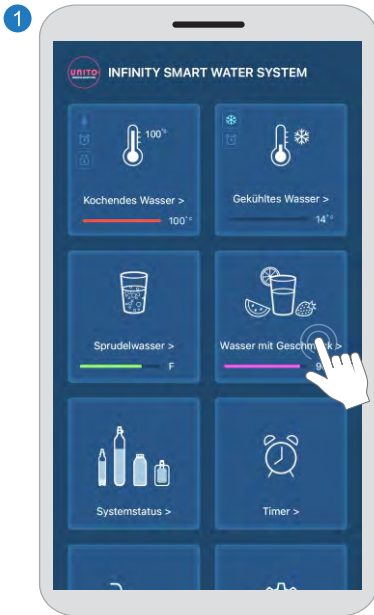
Kaltwasserbetrieb (• SPARKLE • ELEMENTS • INFINITY)



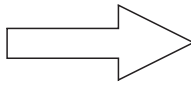
Sodawasserbetrieb (• SPARKLE • INFINITY)



Optionen für aromatisiertes Wasser (• LAVA • SPARKLE • ELEMENTS • INFINITY)



Systemstatus

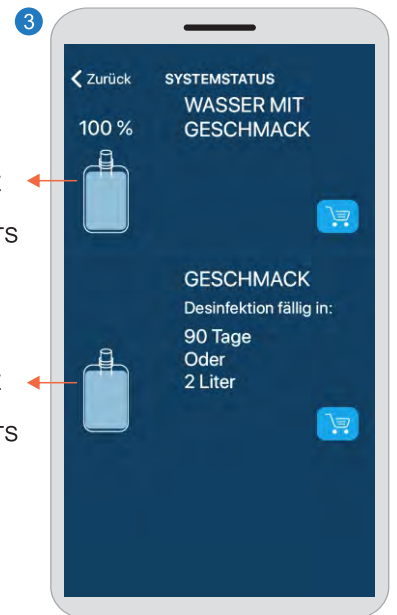
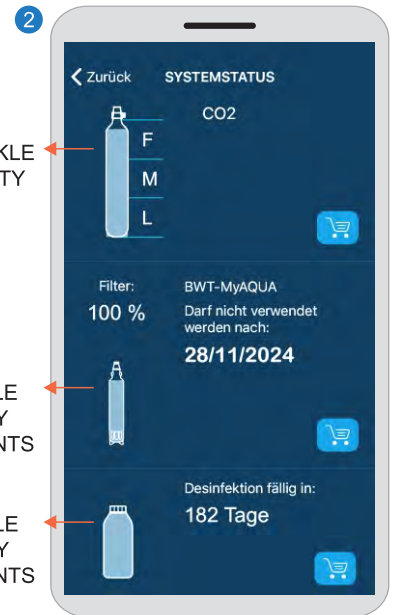


- SPARKLE
- INFINITY



- SPARKLE
- INFINITY
- ELEMENTS
- LAVA

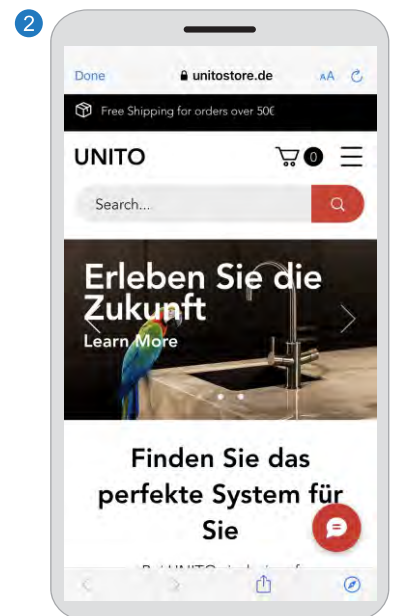
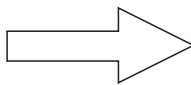
- SPARKLE
- INFINITY
- ELEMENTS



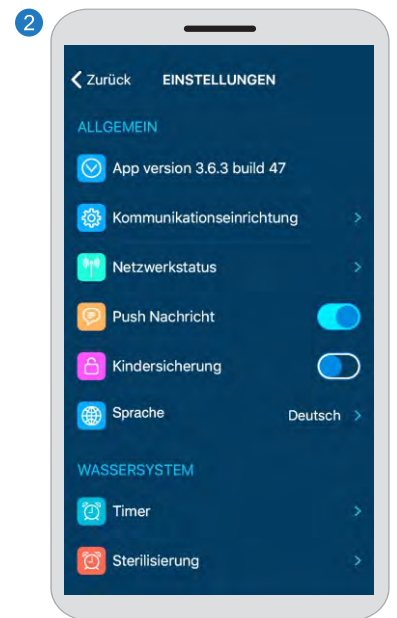
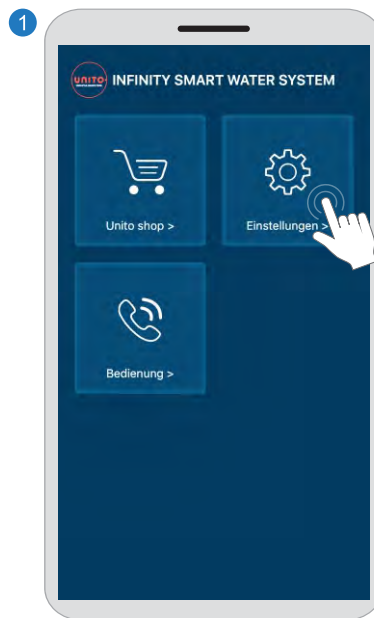
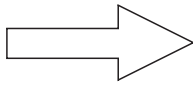
- SPARKLE
- INFINITY
- ELEMENTS
- LAVA

- SPARKLE
- INFINITY
- ELEMENTS
- LAVA

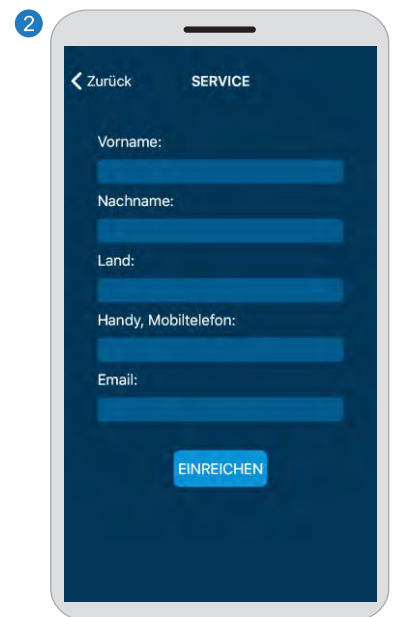
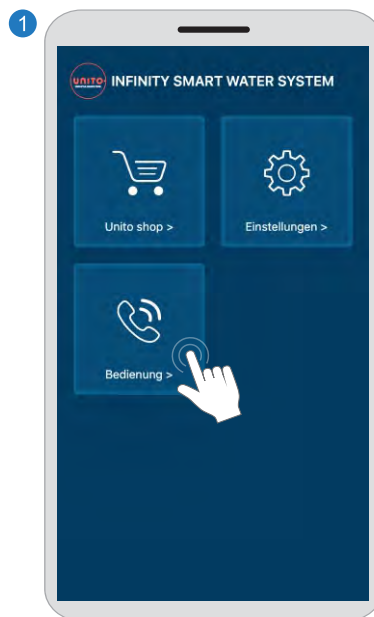
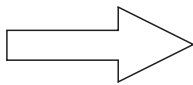
UNITO Shop

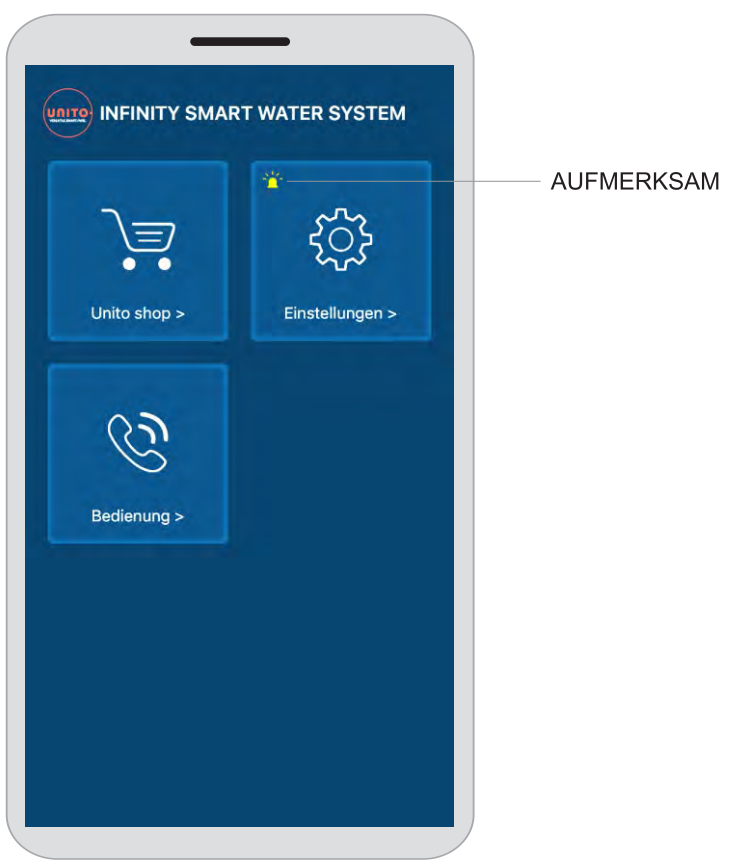


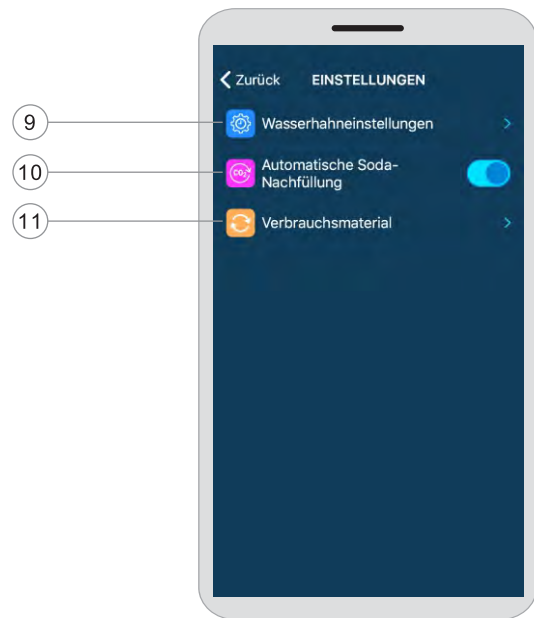
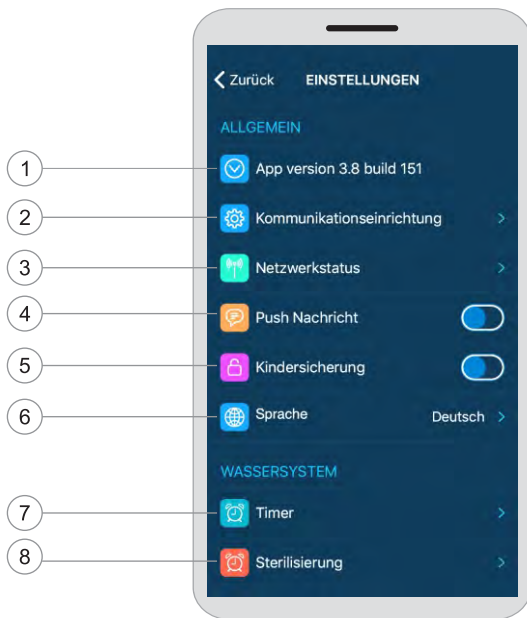
Einstellungen



Bedienung







① App Version

Zeigt die Versionsnummer der UNITO ANYWHERE APP an.

② Kommunikationseinstellung

Wählen Sie zwischen Direkt/Hub/Cloud-Modus (siehe Seiten 13-14).

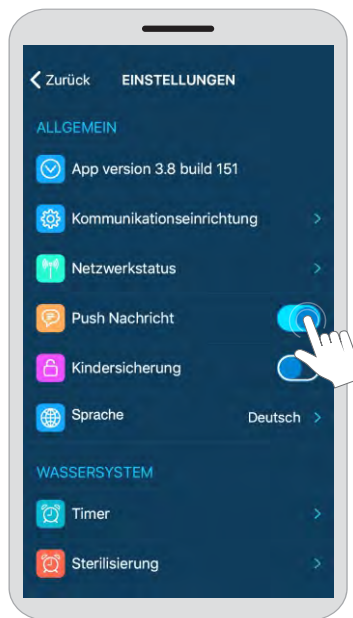
③ Netzwerkstatus

Zeigt den aktuellen Status des Systemnetzwerks an.



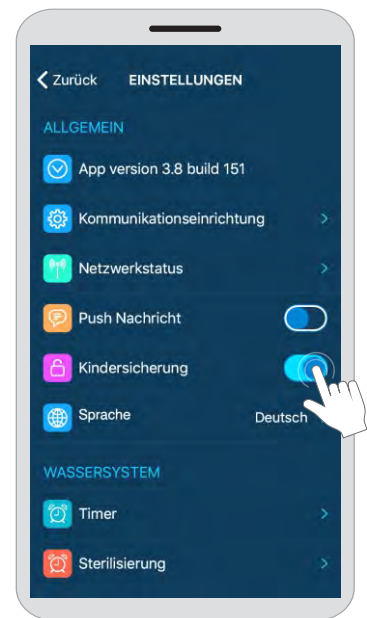
4 Push Benachrichtigungen

Push Benachrichtigungen soll die Nutzer über neue Daten aus dem Wassersystem oder Status-Updates in Echtzeit informieren. Der Benutzer kann diese Funktion aktivieren/deaktivieren.



5 Kinderschutz

Schalte um, um ein unbeabsichtigtes Betreiben der Wasseranlage durch Kinder zu vermeiden.



6 Sprache

Wählen Sie eine Sprache für UNITO ANYWHERE APP.



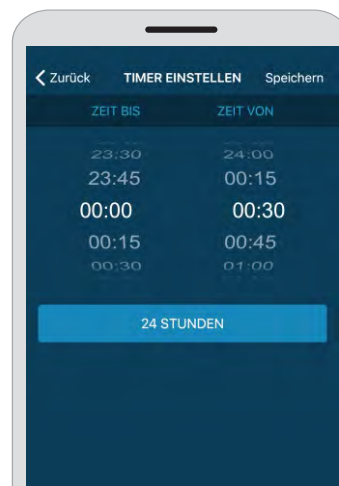
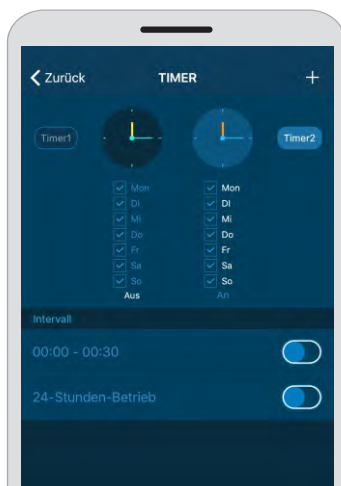
7 Timer

Timer Profil, mit denen Benutzer Energie sparen können, indem sie die Betriebszeit des Systems einstellen.

Timer einstellen:

- Tippen Sie in der Menüleiste auf Einstellungen >Timer um den Timer einzustellen, standardmäßig ist er im 24 Stunden Betriebsmodus, Schalter umschalten auf den Modus um die Timer-Einstellungen zu aktivieren.
- In dem Timer-Einstellungen Bildschirm tippen Sie auf **Timer 1** oder **Timer 2** um Timer 1 oder Timer 2 auszuwählen, tippen Sie um die Betriebstage des Timer auszuwählen. Tippen Sie Zurück um die Einstellungen zu bestätigen.
- Tippen Sie **+** um die Arbeitszeit-Intervalle einzustellen. Tippen Sie auf Speichern, um die Einstellungen zu bestätigen. Wenn Sie zum Beispiel die Tage Montag bis Freitag auswählen und die Einstellung der Zeit von 7:00 Uhr bis 22:00 Uhr wählen, dann wird sich das Wassersystem automatisch um 7:00 Uhr einschalten und an jedem Wochentag um 22:00 abschalten.

Hinweis: Sie können zwei Profile erstellen, z.B. Timer 1 für Wochentage und Timer 2 für Wochenenden.

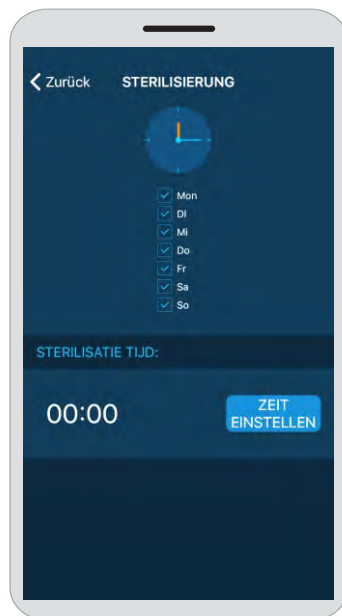


- (4) Um den Timer zu stoppen und zu starten, Schalten sie die Taste Ein/Aus um:



8 Sterilisation

Wählen Sie eine Zeit für die Tanksterilisation. Die empfohlene Zeit ist nachts oder zu einer Zeit, zu der das System normalerweise nicht in Betrieb ist.



9 Wasserhahneinstellungen

Autofill-Timer

Richten Sie den Autofill-Timer für Einzel-/Doppelklick ein.

Spültimer

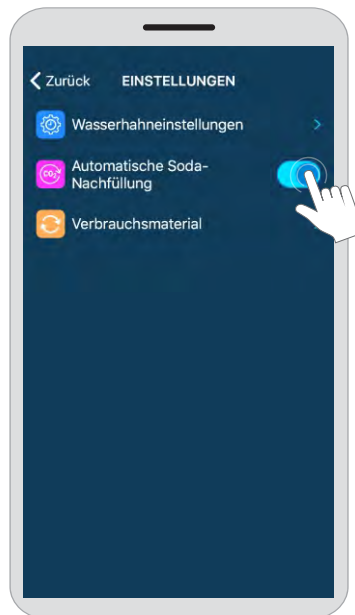
Richten Sie den Timer für die Spülung des Auslaufs ein, um die letzten Abgaben zu entfernen.



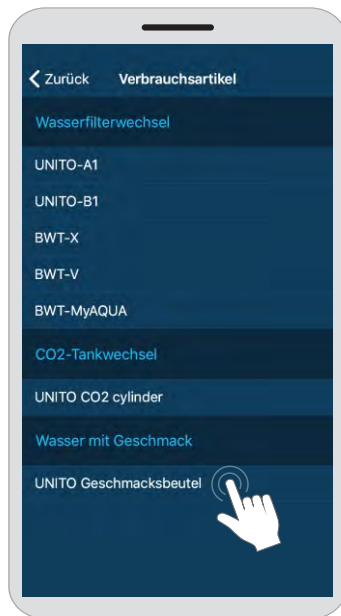
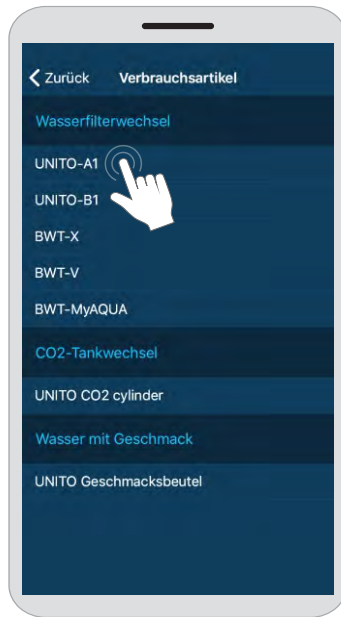
10 Automatisches Nachfüllen des Sodatanks

Aktivieren/deaktivieren Sie den automatischen Soda-Remake-Betrieb.

Bei Deaktivierung muss der Benutzer manuell eine neue Charge Sodawasser zubereiten (Benutzerhandbuch - Manuelle Zubereitung von Sprudelwasser).



11 Verbrauchsmaterial
Informieren Sie das System, wenn Wasserfilter, CO2-Zylinder oder Aromabeutel ausgetauscht wurden.



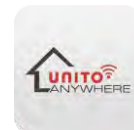
De UNITO ANYWHERE APP is speciaal ontworpen voor de bediening van het UNITO watersysteem. De gebruiker kan de watertemperatuur aanpassen, de timer instellen, de prestaties van het systeem in de gaten houden en andere functies voor water- en energiebesparingen instellen.

Systeemvereisten

- Voor een efficiënt gebruik is een stabiele netwerk- of bluetoothverbinding essentieel.
- iOS 11.0/Android 8.0 of hoger.

De APP downloaden en installeren

- Verbind uw slimme mobiele apparaat met een Wi-Fi-netwerk via een router.
- Zoek in de Apple App Store of Google Play naar "UNITO ANYWHERE" om de UNITO ANYWHERE APP te downloaden en te installeren op uw slimme apparaat.



VERBINDINGEN

Er is een methode om de APP aan te sluiten op het UNITO smart watersysteem:
Directe verbinding. Verkrijgbaar met • LAVA • SPARKLE • ELEMENTS • INFINITY.

Directe verbinding

- Zet de Bluetooth-verbinding in uw slimme mobiele apparaat aan.
- Start UNITO ANYWHERE APP en volg de onderstaande stappen:

1 Home screen of the app. Tap on 'Instellingen' (Settings).

2 'INSTELLINGEN' screen. Tap on 'Communicatie setup' (Communication setup).

3 'CONNECTION SETUP' screen. Tap on 'Verbind' (Connect) and then 'DIR' (Direct).

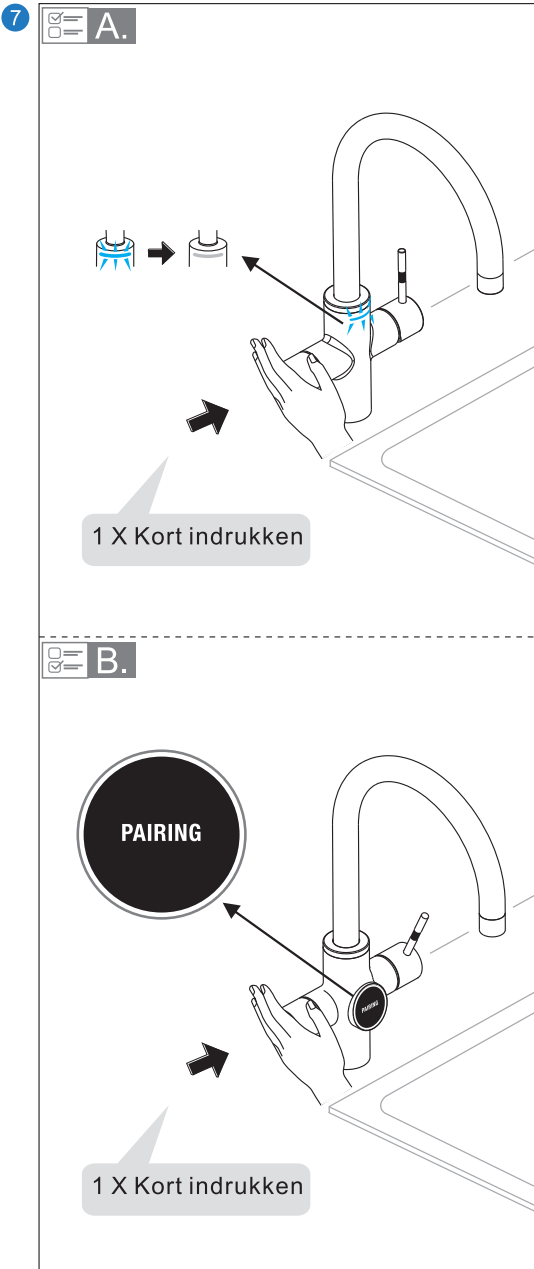
4 'Scannen' (Scan) screen. Tap on the detected 'Unito peripherals' (UNITOWslnf_xxx).

5 'CONNECTION SETUP' screen. Tap on 'Koppelen' (Connect). A green checkmark indicates successful connection.

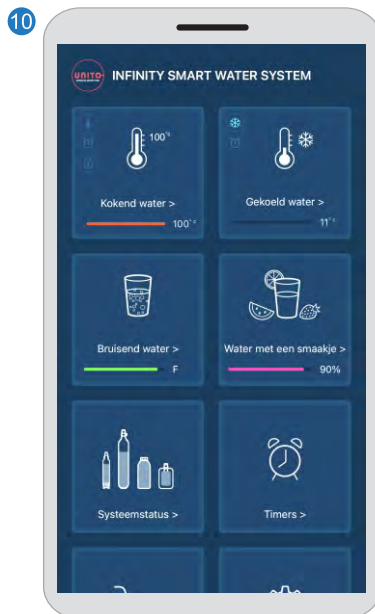
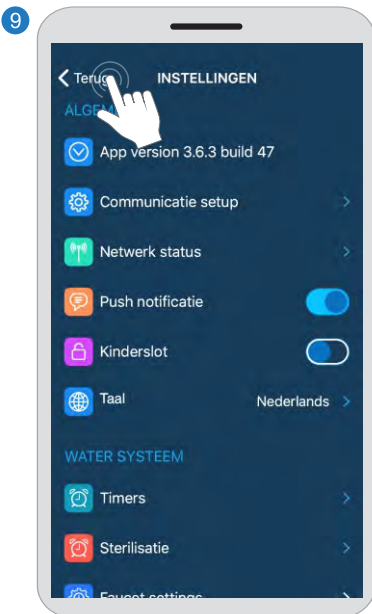
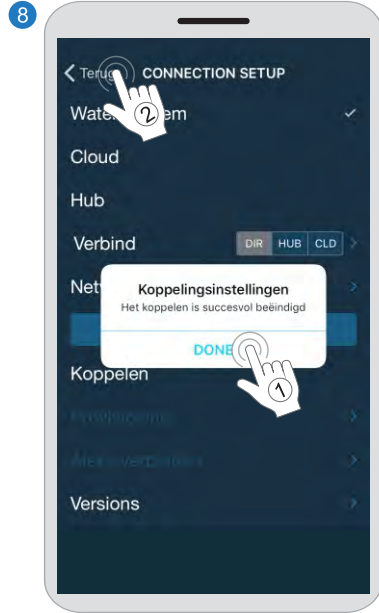
6 'CONNECTION SETUP' screen. A dialog box 'Koppeliningsinstellingen' (Connection settings) appears with the instruction 'Klik op de kraanknop' (Click on the faucet) and an 'Annuleer' (Cancel) button.

Druk op DIR om de directe modus te selecteren en druk dan op Connect.

Selecteer de beschikbare UNITO FAUCET.

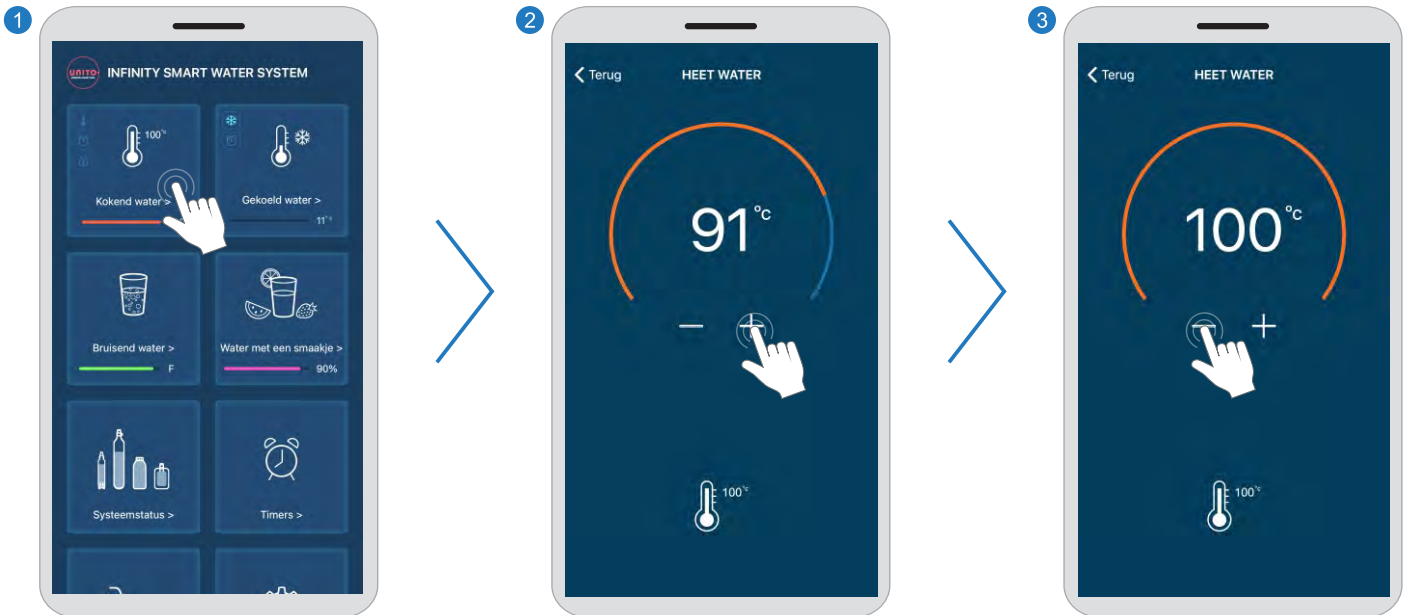


Druk snel op de elektronische knop op de UNITO-kraan.

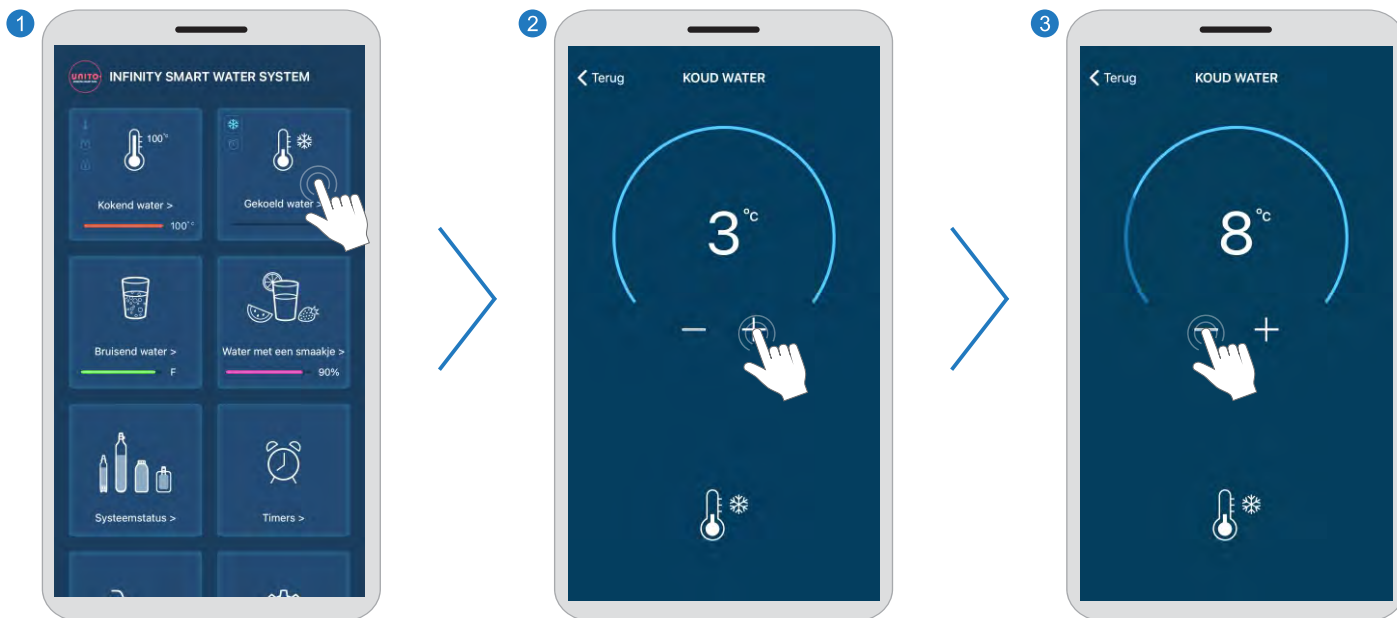




Heet water operaties (• LAVA • ELEMENTS • INFINITY)



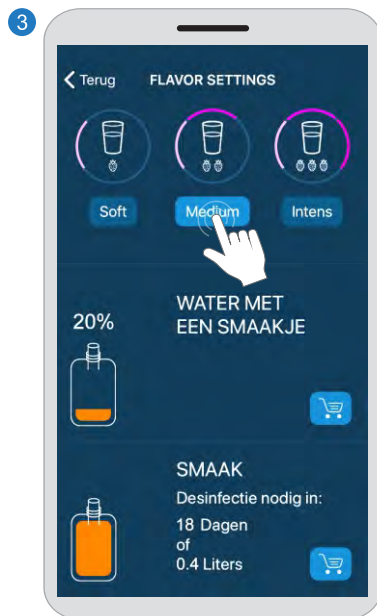
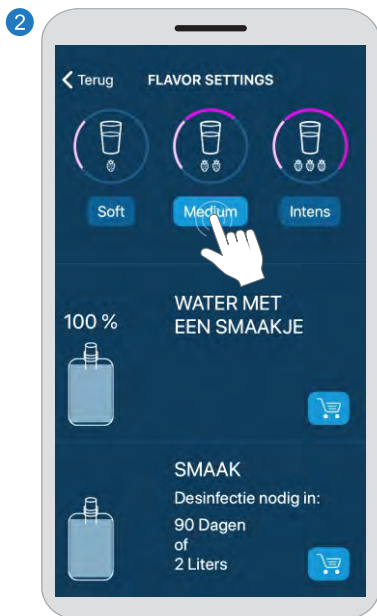
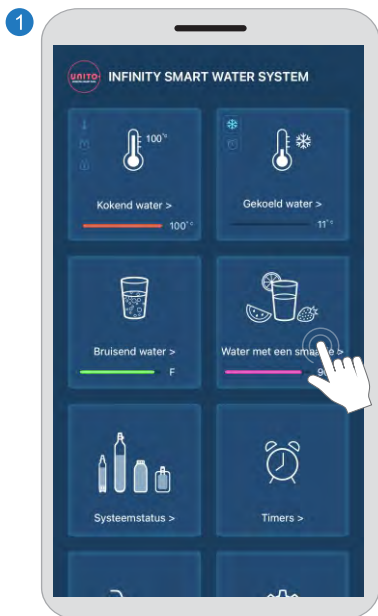
Koud water operaties (• SPARKLE • ELEMENTS • INFINITY)



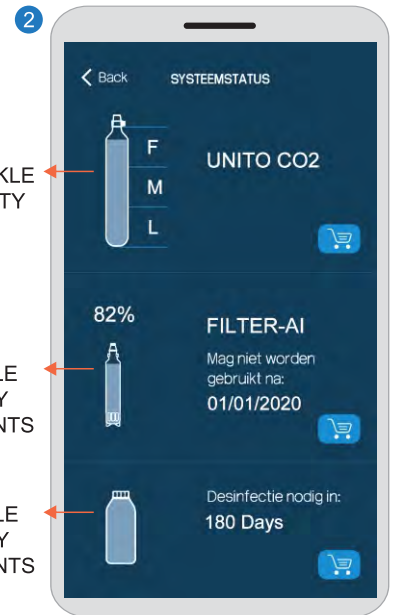
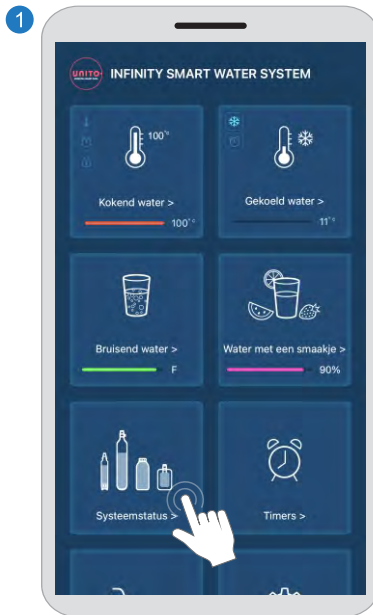
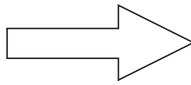
Sodawaterbewerkingen (• SPARKLE • INFINITY)



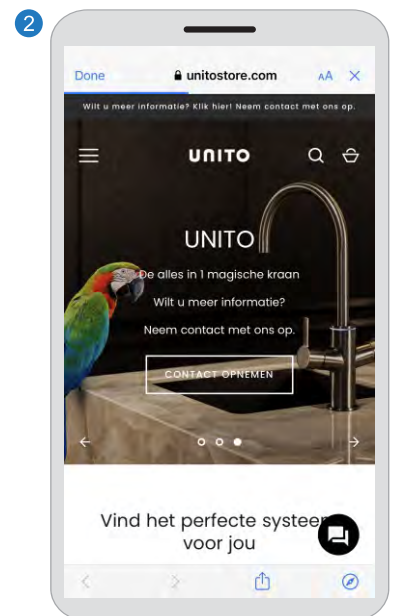
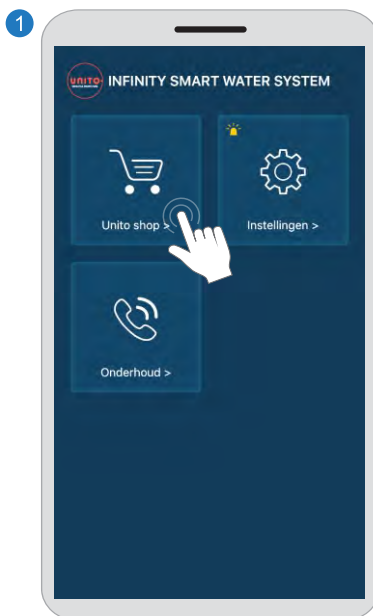
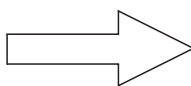
Smaakwater operaties (• LAVA • SPARKLE • ELEMENTS • INFINITY)



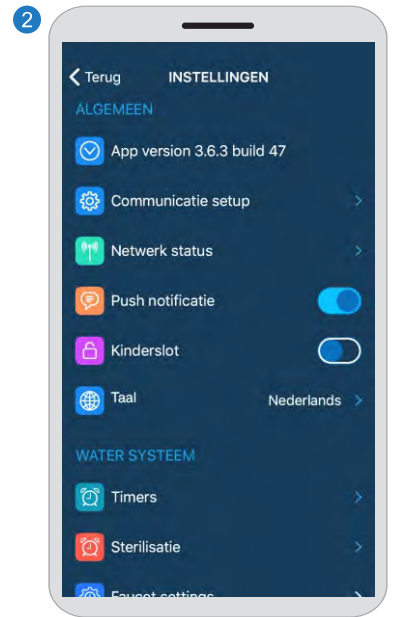
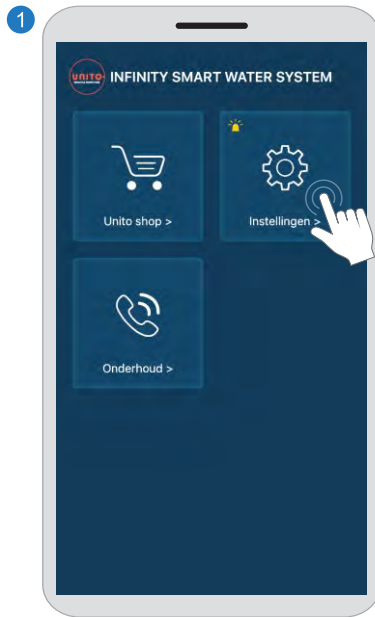
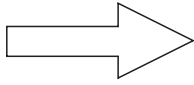
Systemestatus



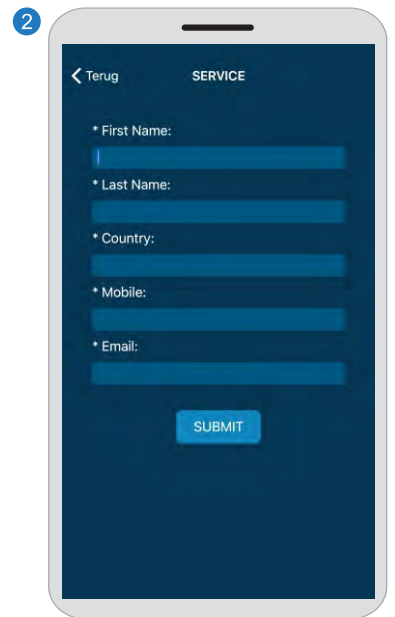
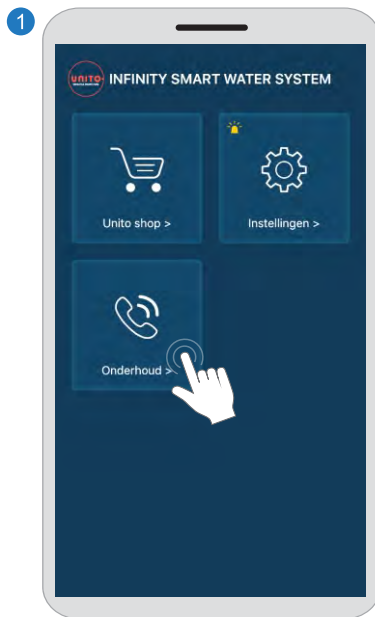
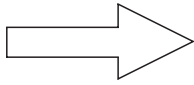
UNITO Shop



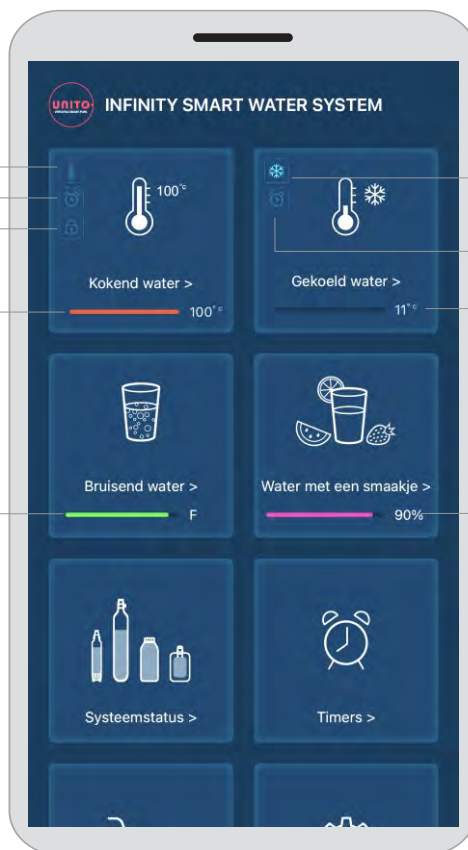
Settings



Service



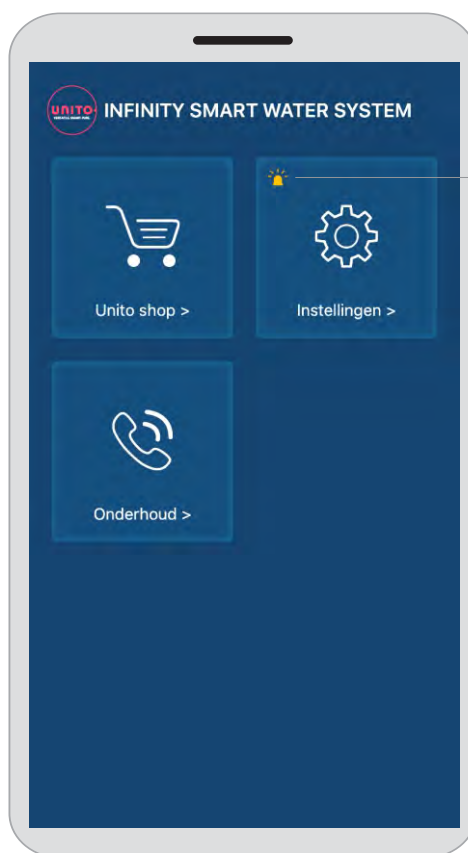
VERWARMINGSINDICATOR
TIMER INDICATOR
KINDERVERGREDELING
WARMWATERTEMPERATUUR



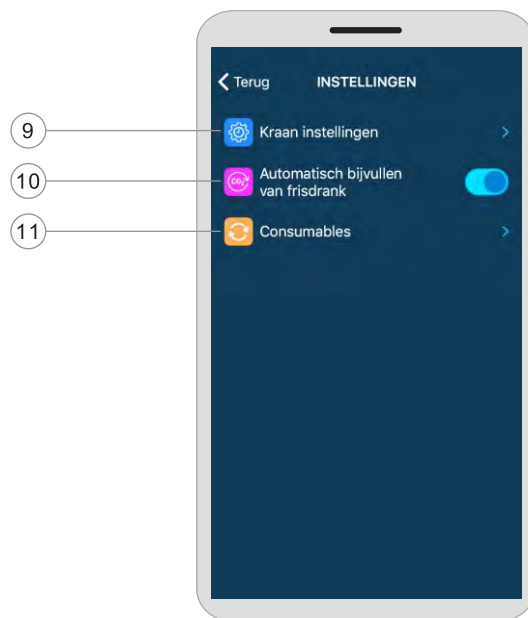
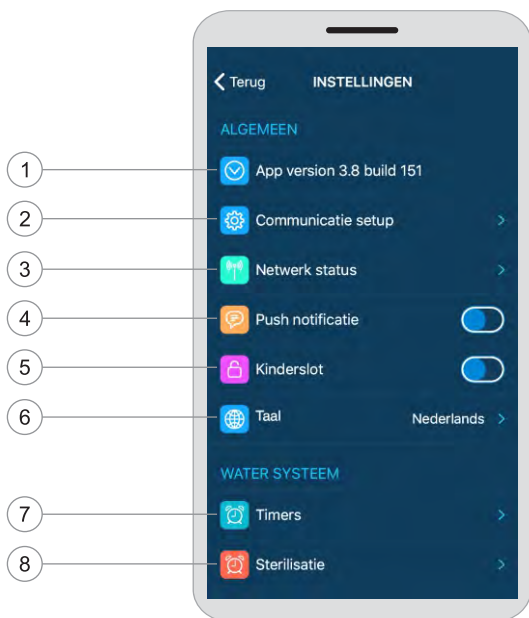
CO2 VOLUME

KOELINDICATOR
TIMER INDICATOR
KOUDWATERTEMPERATUUR

SMAAK VOLUME



WAARSCHUWING



① App versie

Toont het versienummer van de UNITO ANYWHERE APP.

② Communicatie-instellingen

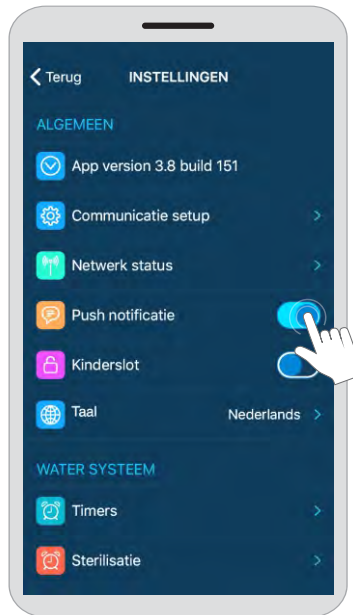
Kiezen tussen Directe/Hub / Cloud modus (zie pagina's 25-26)

③ Netwerkstatus

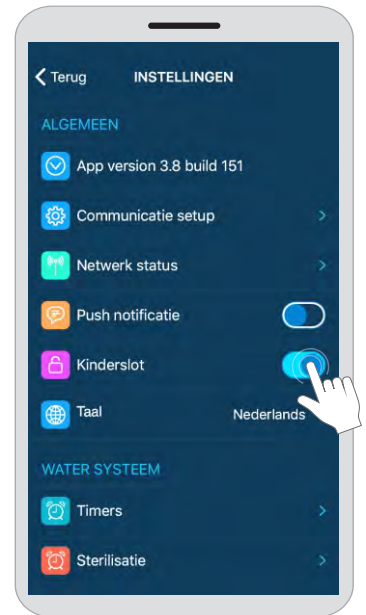
Toont de huidige netwerkstatus van het systeem.



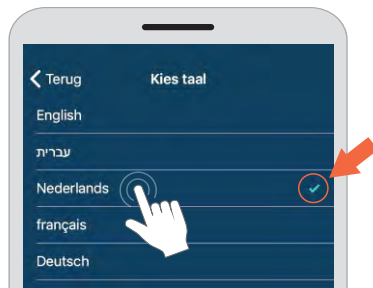
- ④ **Push notificaties**
Push notificaties zijn bedoeld om gebruikers op de hoogte te stellen van nieuwe gegevens uit het watersysteem of real-time statusupdates. De gebruiker kan deze mogelijkheid in-/uitschakelen.



- ⑤ **Kinderslot**
Schakel in om onbedoelde bediening van het watersysteem door kinderen te voorkomen.



- ⑥ **Taal**
Kies een taal voor de UNITO ANYWHERE APP.

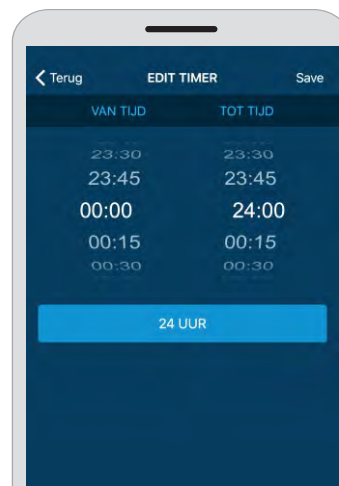
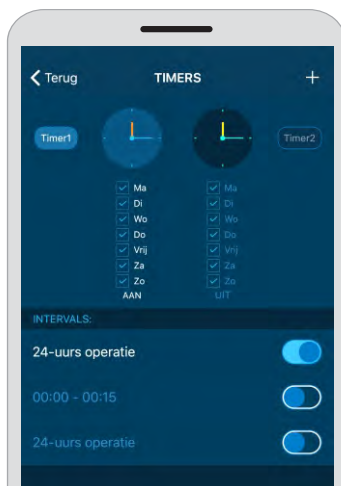


- ⑦ **Timers**
Met behulp van timers kunnen gebruikers energie besparen door de gebruikstijd van het systeem in te stellen.

Om timers in te stellen:

- (1) Druk in de menubalk op Instellingen > Timers om de timer in te stellen, standaard is deze 24 uur per dag ingesteld, schakel de knop naar de aan-modus om de timerinstelling in te schakelen.
- (2) Druk in het scherm Timerinstellingen op **Timer 1** of **Timer 2** om Timer 1 of Timer 2 te selecteren, druk op de timer te selecteren. Druk op Terug om de instellingen te bevestigen.
- (3) Druk op om de intervallen in te stellen. Druk op Opslaan om de instellingen te bevestigen. Door bijvoorbeeld maandag tot en met vrijdag te selecteren en de tijd in te stellen van 7:00 tot 22:00 uur, wordt het watersysteem automatisch om 7:00 uur 's morgens ingeschakeld en elke weekdag om 22:00 uur op uit gezet.

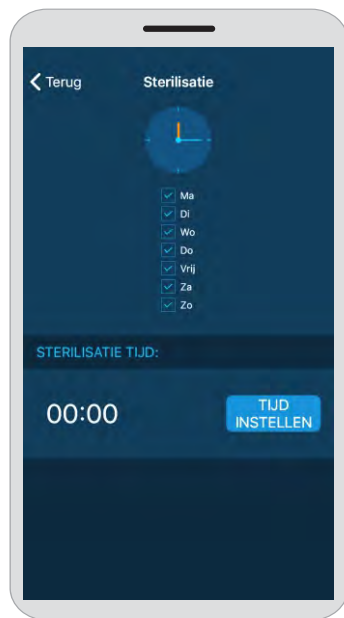
Opmerking: U kunt twee profielen maken, bijvoorbeeld Timer 1 voor weekdays en Timer 2 voor weekends.



- (4) Om de timer te stoppen en te starten, schakelt u de Aan/Uit knop in:
 Timer staat op aan Timer staat op uit
 Schuif een interval naar links om deze te verwijderen.

8 Sterilisatie

Kies een tijdstip voor de sterilisatie van de tank. De aanbevolen tijd is 's nachts of op een tijdstip dat het systeem normaal gesproken niet in gebruik is.



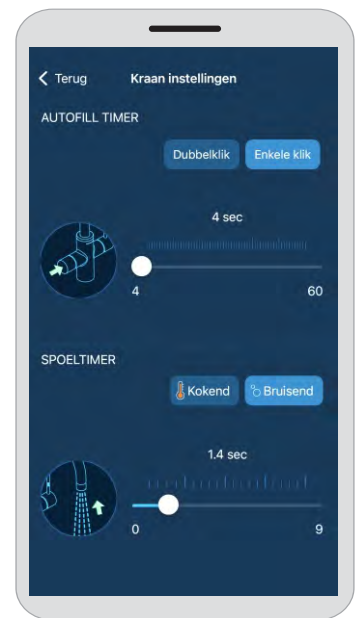
9 Faucet settings

timer voor automatisch aanvullen

Timer voor automatisch aanvullen instellen voor enkele/dubbele klik.

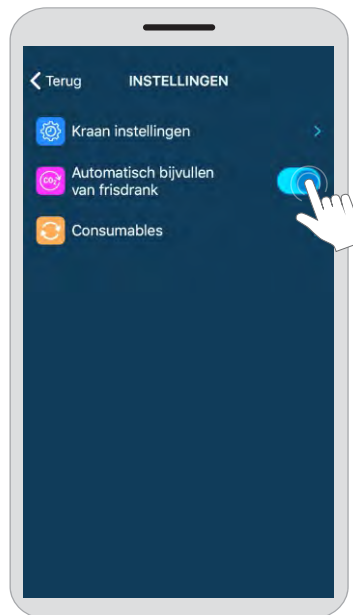
spoeltimer

Stel de timer in om het resterende water in de tuit weg te spoelen.



10 Automatisch bijvullen van

SodawaterActiveer/Deactiveer de automatische bewerking van het opnieuw maken van frisdrank. Indien uitgeschakeld, moet de gebruiker handmatig een nieuwe batch sodawater bereiden (gebruikershandleiding - manuele behandeling van drinkwater).



- ⑪ **Verbruiksartikelen**
Informeert het systeem wanneer het waterfilter, de CO2-cilinder of het smaakwater zakje is vervangen.





 info@unito-tech.com

 www.unitostore.com